

## V-SERIES™ VIBRATION TESTING

L.A.B. Transportation Simulators are used to determine the ability of packages and products to withstand shocks and vibrations encountered during in-plant handling and warehousing, shipping and distribution warehousing. Our transportation simulators use three methods of motion; rotary or circular synchronous motion, non-synchronous motion, and vertical linear motion to deliver the precise results you expect

### CONFIDENCE IN L.A.B.

Our V-Series™ of mechanical vibration systems provide a cost effective way to put packages and products through the rigors of transport. We offer a wide variety of standard table sizes and capacities and offer a standard frequency range from 2 to 5 Hz.

### V-SERIES™ FEATURES

- Rotary (Synchronous) Motion (Standard)
- Digital LCD speed display
- Meets ASTM, TAPPI, ISO, and ISTA standards
- Digital timer with test settings and expiration
- Infinitely variable frequency adjustment throughout the 2-5 Hz range
- Adjustable high back fences
- Low front fences
- Conveniently mounted standard controls
- Moveable floor stand
- Motor controls pre-wired per customer specifications
- Hard decking for Excellent wear resistance
- Load capacities available in 100, 250, 400, 1250, 2000, 3000, 4000, 6000, and 8000 lbs.

### V-SERIES™ OPERATION

Standard instrumentation includes a tachometer that indicates test RPM, a timer that allows adjustable preset test duration to be automatically performed and START/STOP push buttons. These are prewired and housed in a pedestal mounted control box.



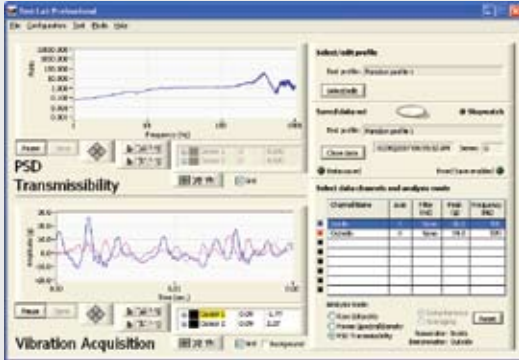


## V-SERIES™ OPTIONS

- Non-Synchronous Motion (N/S)
- Vertical Linear Motion
- International power source
- Water or fire proof wiring
- Expanded Table
- CE Compliance

## ADDITIONAL OPTION

### TEST LAB PROFESSIONAL > DATA ACQUISITION



- Professional grade data acquisition and analysis system
- Up to 4 channels
- Automatic sampling rate
- Minimum pulse duration capture is 0.1 ms
- Automatic or manual triggering
- Low pass data filtering
- 16 bit A/D
- Multi-tool data manipulation

## V-SERIES™ MODEL COMPARISON TRANSPORTATION SIMULATOR



Machine Type	Metric	English	Metric	English	Metric	English	Metric	English	Metric	English	Metric	English	Metric	English	Metric	English
Machine Type	100V		250V		400V		1250V		2000V		4000V		6000V		8000V	
Payload Capacity	45.4 kgs	100 lbs	113.5 kgs	250 lbs	181.6 kgs	400 lbs	567.5 kgs	1,250 lbs	908 kgs	2,000 lbs	1,816 kgs	4,000 lbs	2,724 kgs	6,000 lbs	3,632 kgs	8,000 lbs
Standard Table Size	61x71 cm	24"x28"	91x107cm	36"x42"	122x122cm	48"x48"	152x152cm	60"x60"	152x152cm	60"x60"	152x152cm	60"x60"	152x152cm	60"x60"	213x213cm	84"x84"
Table Height	36 cm	14"	43 cm	17"	48 cm	19"	56 cm	22"	56 cm	22"	58 cm	23"	66 cm	26"	71 cm	28"
Maximum Acceleration	1.25G		1.25G		1.25G		1.25G		1.25G		1.25G		1.25G		1.25G	
Frequency Range	2-5 Hz (120-300 RPM)															
Displacement	1" fixed displacement (2.54cm)															
Standard Motions	Rotary		Rotary		Rotary, Vertical Linear, and Non Synchronous available											
Package Restraints	NA	NA	61cm	24"	91cm	36"	71 cm	48"	71 cm	48"	152 cm	60"	152 cm	60"	152 cm	60"
Required Floor Space	71x81cm	28"x32"	91x109cm	36"x43"	122x124cm	48"x49"	165x172cm	65"x68"	168x170cm	66"x67"	170x175cm	67"x69"	175x178cm	69"x70"	180x185cm	71"x73"
Apx. Ship Weight	204 kg	450 lbs	340 kg	750 lbs	417 kg	920 lbs	907 kgs	2,000 lbs	953 kg	2,100 lbs	1,361 kgs	3,000 lbs	1,814 kgs	4,000 lbs	2,268 kgs	5,000 lbs
Utility Requirements	115V / 60Hz		115V / 60Hz		230V / 60Hz		230V / 60Hz		230V / 60Hz		460V / 60Hz		460V / 60Hz		460V / 60Hz	
Other International power sources available upon request																